



# IFNA Integrated Emergency Services



**INDEPENDENT FIRST NATIONS ALLIANCE**

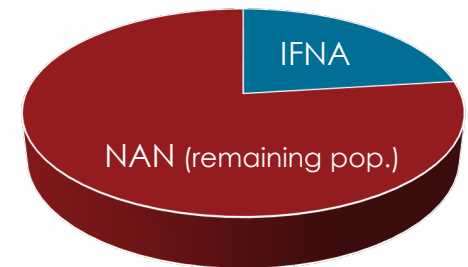
LAC SEUL | WHITESAND | KITCHENUHMAYKOOSIB INNINUWUG | PIKANGIKUM | MUSKRAT DAM



# About IFNA

- The independent first nations alliance (IFNA) provides services to its five member communities
- IFNA: 10,367 members <sup>1</sup> - representing **over 23%** of Nishnawbe Aski Nation (NAN) total population <sup>2</sup>
- IFNA communities belong to 3 different Provincial Territorial Organizations
  - Grand Council Treaty 3 – Lac Seul First Nation
  - NAN – Muskrat Dam First Nation
  - Robinson-Huron Treaty – Whitesand First Nation
  - Independent – K.I., Pikangikum (NAN affiliated)

IFNA Communities  
Registered Population Within NAN



- IFNA Communities Population
- Remaining Population - NAN Communities



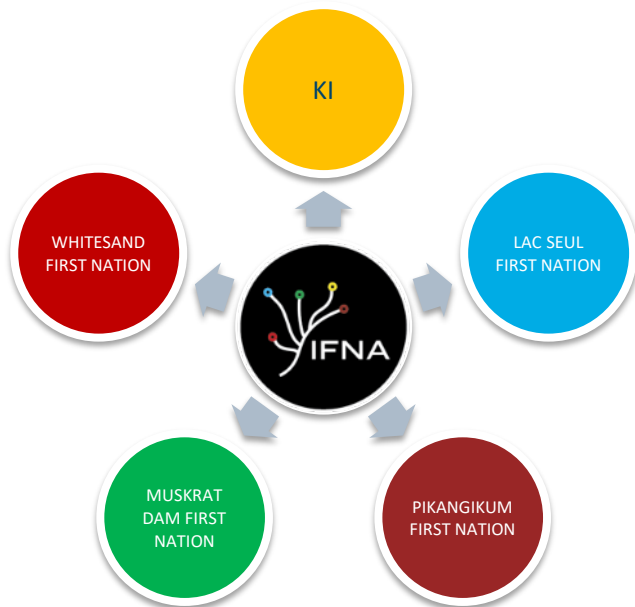






# Emergency Operations to Integrated Emergency Services

The IFNA Emergency Operations division grew from a response to a declared state of emergency and request for evacuation support in late 2019.









# Perennial Emergencies indeed – from +40 to -60

February 2021 – Muskrat Dam

Power Outage Support







# July-August 2021: Pikangikum First Nation Support & Evacuations





















- Honest Conversations
- One step at a time
- Stronger Together





## Some Integrated Emergency Services highlights

- **Fire Response** – Pikangikum, Deer Lake & Muskrat Dam
- **Search & Rescue** – Missing persons - Pikangikum and LSFN
- **Water support** – WTP - Neskantaga & Lac Seul
- **Power Failure** – Muskrat Dam
- **Flooding & Freezing** – Pikangikum, Bearskin Lake
- **Security** – Pikangikum & Lac Seul
- **COVID Support** – Pikangikum and Lac Seul
- **Vaccine Clinics** – Muskrat Dam, Pikangikum and Lac Seul
- **EMS Support** – Emergency Airlift of Ambulances, EMS services
- **Proactive Planning and Engagement**









## 2021 IFNA Emergency Ops in Pikangikum –







# Drone Operations

## "Boots on the Ground – Eye in the Sky"



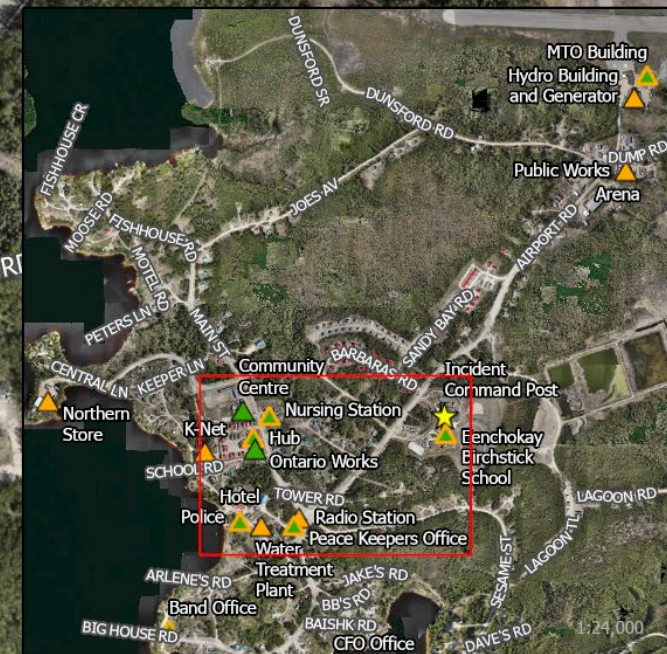
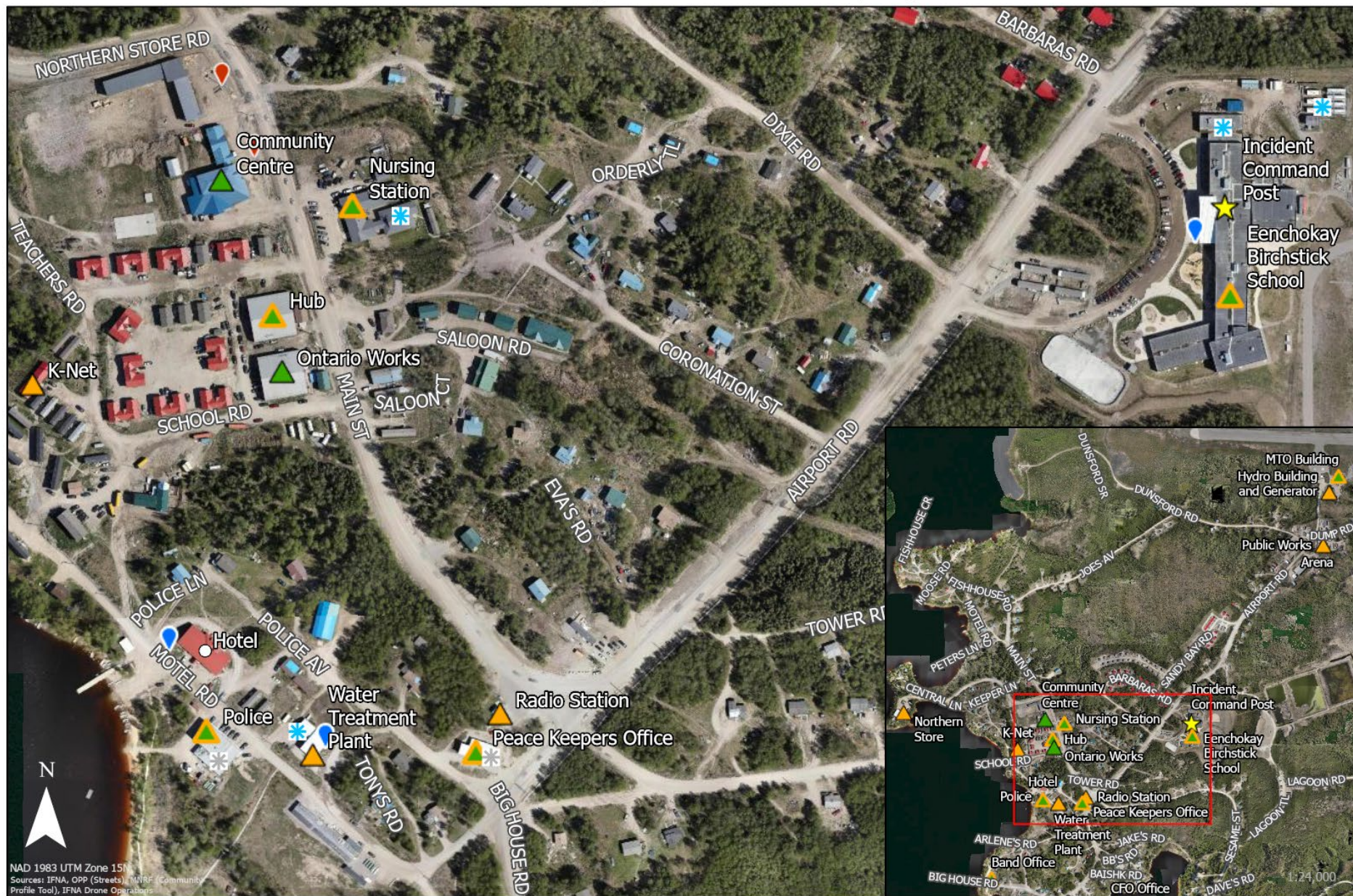
IFNA Drone Photo - Pikangikum School



IFNA Drone Mapping



# IFNA EOC - Pikangikum Overview - July 29, 2021



- ▲ Critical Infrastructure (CI)
- ▲ Shelter In Place & CI
- Hydrant - Needs Fix
- ★ Incident Command Post
- ▲ Shelter In Place
- ★ Fire Equipment Deployed
- Other Building
- Hydrant/Fill Stn
- ★ Equipment Deployment TBC

1:3,500  
0 40 80 160 Meters

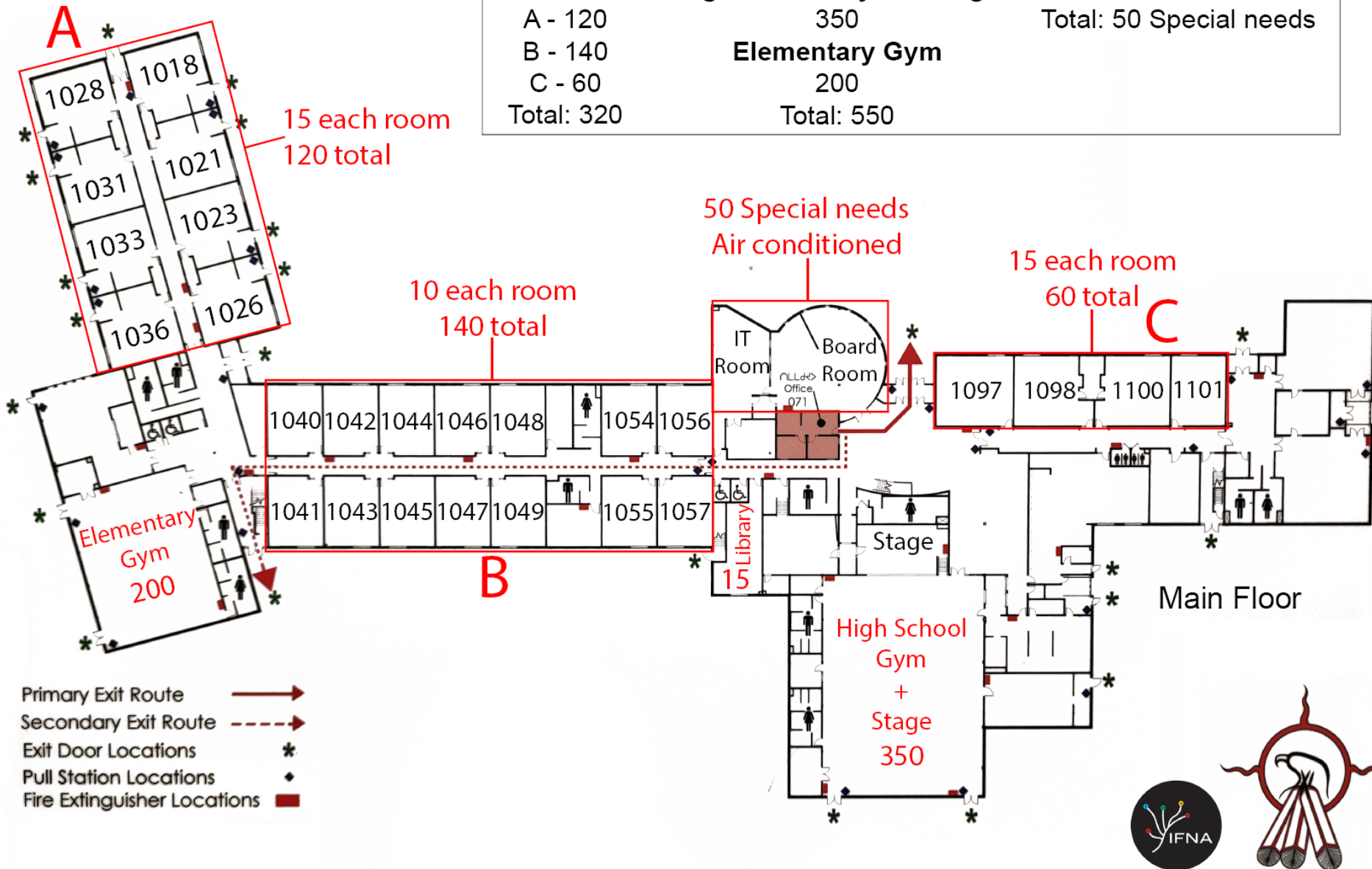
Updated: 2021/07/29 1530 CST  
This map document is confidential and shall not be shared without express permission from IFNA EOC or Pikangikum First Nation Administration. IFNA makes no guarantees of the accuracy or reliability of this map, and is not responsible for its misinterpretation or misuse.





# Shelter In Place - Eenchokay Birchstick School - Pikangikum First Nation

Classrooms	High School Gym + Stage	IT Room + Round Room
A - 120	350	Total: 50 Special needs
B - 140	<b>Elementary Gym</b>	
C - 60	200	
Total: 320	Total: 550	





## IFNA Momentum – Next Generation of Youth

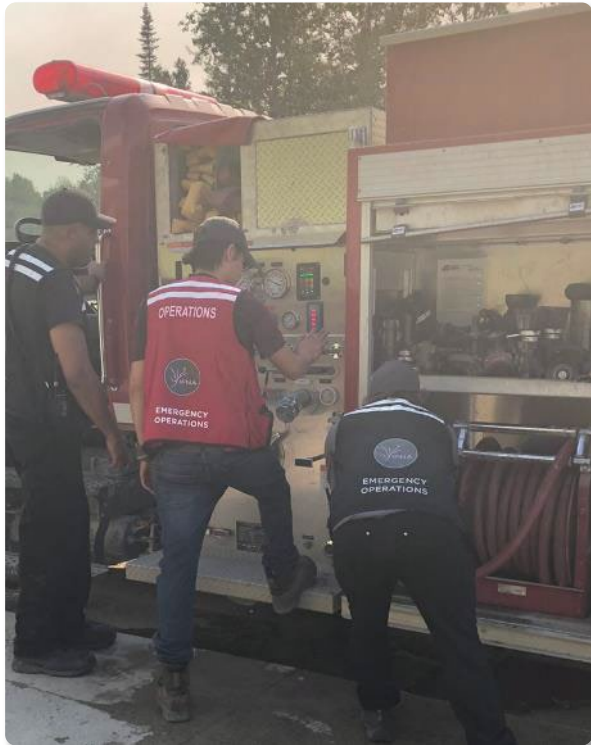




All plans include IFNA  
community youth training  
for paramedic and  
firefighter cross training



An official grand opening for its Home Away from Home Community Student Dwelling in Sioux Lookout, Ont. earlier this week. (Submitted by Patrick Keating)







## Youth From IFNA Communities Being Trained







# INTEGRATED EMERGENCY SERVICE MODEL



## EMERGENCY MANAGEMENT

- 24/7 Deployable IMT & EOC
- Hazard Identification Risk Assessments (HIRA)
- Community Emergency Plans
- Evacuation & Host Site Support
- Regional Incident Support Team

## REGIONAL FIRE RESCUE

- 24/7 Response (incl. Emergency Medical Responder)
- Fire Prevention / Education / Fleet Maintenance
- Interface Forest Fire / Structural Training & Reporting
- Critical Infrastructure & Values Protection
- Specialized Responses (SAR, HAZMAT, Ice Rescue, Investigations, etc.)

## PARAMEDIC SERVICES

- 24/7 Emergency Medical Response
- Community Training
- Community Para-medicine & Home Visits
- Integration with Nursing Station & Clinical Support
- Integration with Community Wellness Initiatives

## COMMUNITY SAFETY & YOUTH

- 24/7 Joint Mobile Crisis Response (Mental Health with 911 Response)
- Situational Tables & Community Mobilization
- Security & Peacekeeping Support
- Youth Empowerment & Recruiting (all pillars)
- GIS & 911 Mapping

## SUPPORT SERVICES & FLIGHT OPERATIONS

• Planning & HR • Logistics/Infrastructure • Drone Operations • Project Management & Administration

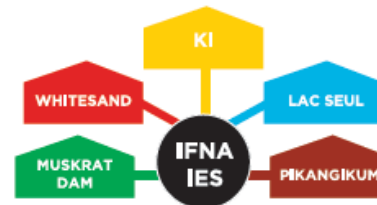
## RESULTS



Community &  
Regional Cross  
Trained Teams



Community  
Multi-Purpose Functional  
Emergency Vehicles



Community  
Emergency Services  
Buildings



Emergency  
Operations  
Center HQ







130604

RCAF ARC











# ABOUT STRONGER TOGETHER: EVACUATION PARTNERSHIPS

An effective hosting model must ensure it has a joint First Nation and municipal strategic plan; allowing all partners to contribute and assist under a singular vision, set of objectives, actions and timelines. This strategy complements each member's strengths, existing efforts, and formalizes collaborative relationships. This framework is a foundation for shifting First Nation communities and municipal partners from coexisting to collaborating, specifically during emergency situations.







[www.ifna.ca](http://www.ifna.ca)