



Rural Housing Information System

Filling The Housing Information Gap in Eastern Ontario

Overview

- **This digital tool aims to provide local, reliable, salient, and current rural data to assist proponents & municipalities in the planning and construction of new, affordable housing.**
- This locally-driven tool will support municipalities and home builders in the planning and development of affordable housing. It also aims to support not-for-profit organizations in implementing housing strategies in rural communities.



Purpose

- The data-driven, outcomes focused platform will harness data in an automated and easy to use public dashboard.
- ROI will work with municipalities to collect the data from communities that may be missing or misrepresented in government and public databases.
- Tool will help facilitate collaboration among and between provincial municipalities to better deliver accurate, up-to-date data and information.
- Ultimately, this information aims to facilitate access to provincial and federal funding for affordable housing development.

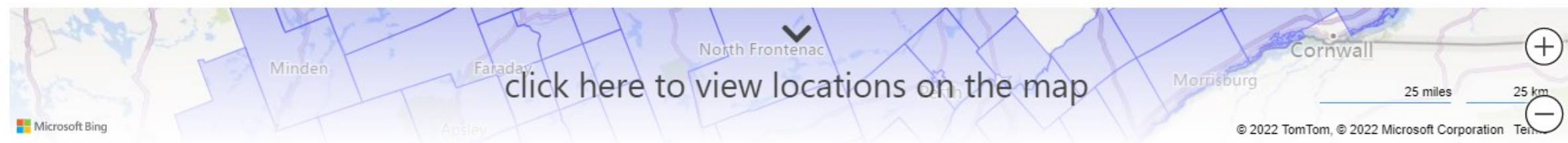
Project Developments

- Aug – Nov 2022: User Testing - municipalities, developers, non-profits.
- Dec 2022: Municipal Surveying and data finalizations.
- Feb 2023: a completed, tested-version ready for scaling across province.
- Feb – Mar 2023: Case studies; interviews on user experience.



Data Selection

Enter a municipality, city, township...



or browse for a location below:



County of Frontenac

[view more](#) ▼



County of Haliburton

[view more](#) ▼



County of Hastings

[view more](#) ▼



City of Kawartha Lakes

[view more](#) ▼



County of Lanark

[view more](#) ▼



United Counties of Leeds And ...

[view more](#) ^

Located in United Counties of Leeds
And Grenville:

- Township of Athens
- Village of Merrickville-Wolford

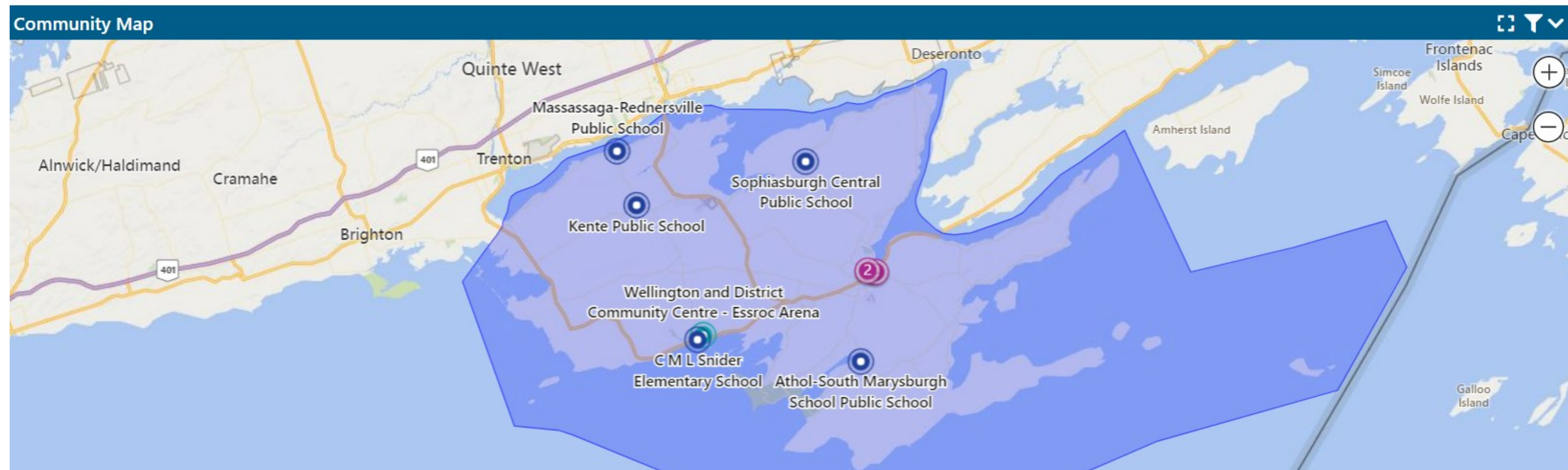
Community Overview Page



Municipal Links

 [Official Plan](#)

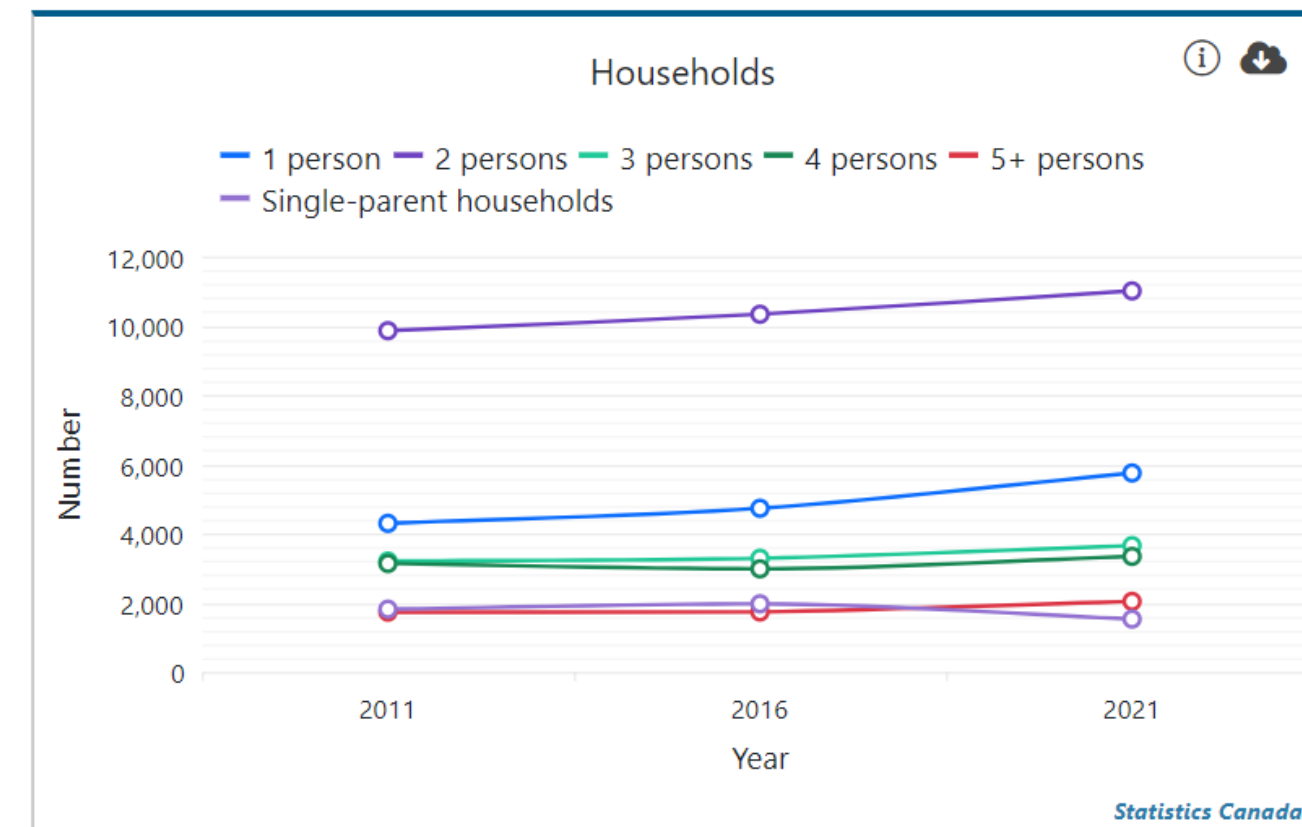
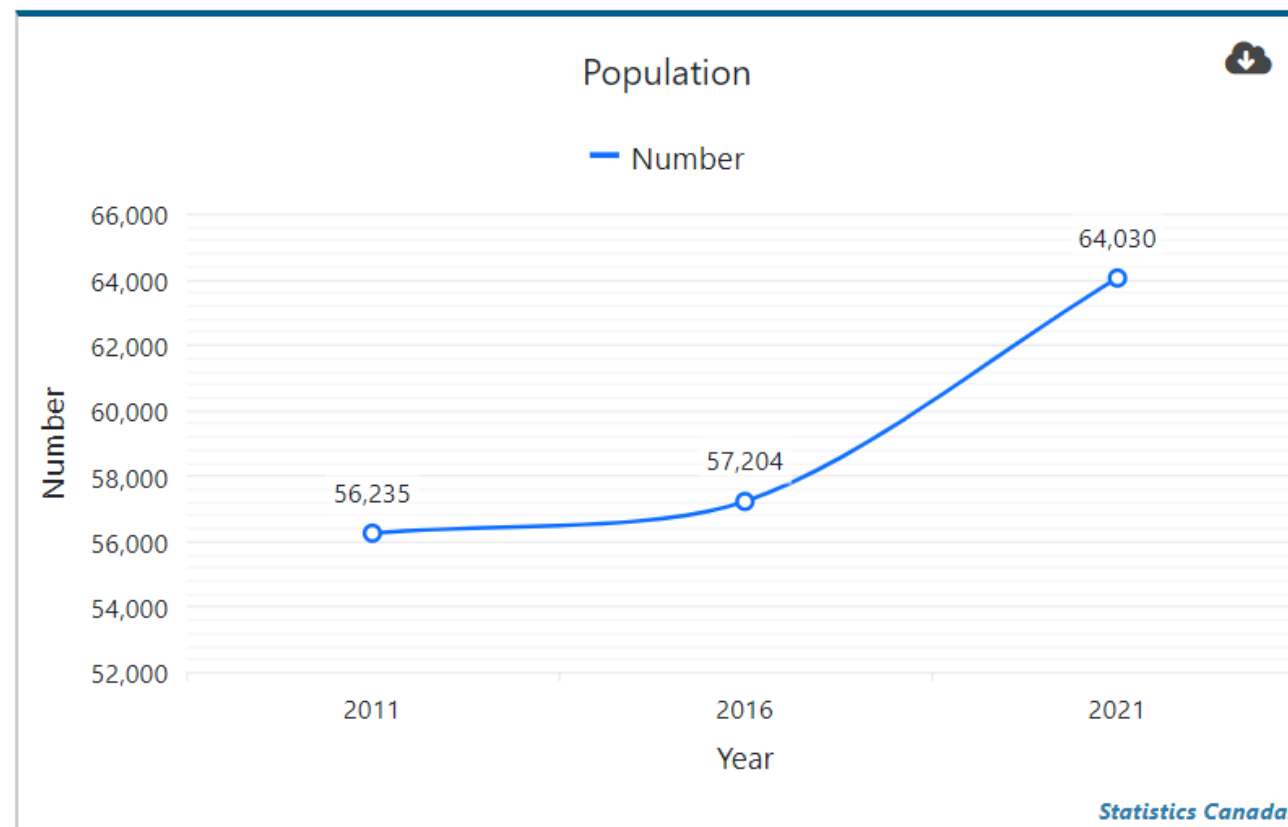
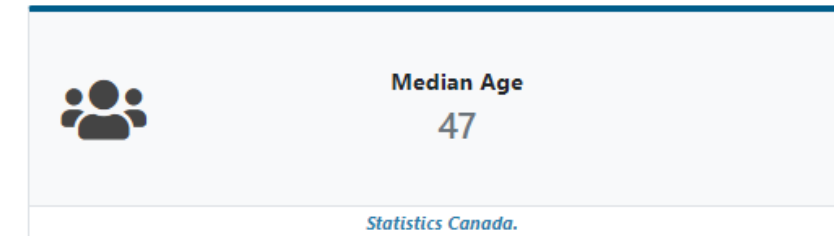
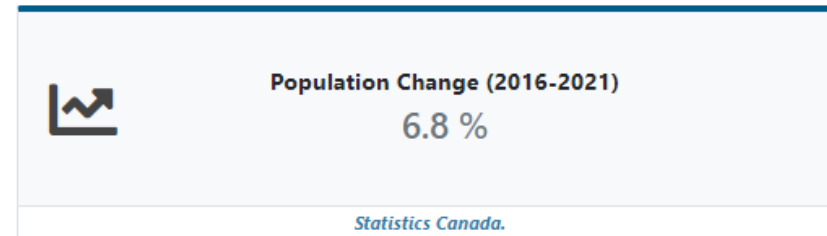
 [Housing and Homelessness Plan](#)



Demographics

Demographics ⓘ

This page shows information about a community's population, age structure, and households. The charts are interactive. Click on the legend items to hide them from the chart. You can also download the data for every chart or table by clicking on the cloud icon.



Employment, Income & Economics

Employment, Income & Economics ⓘ

This page shows information about a community's economy, including major industries, income, and unemployment. The charts are interactive. Click on the legend items to hide them from the chart. You can also download the data for every chart or table by clicking on the cloud icon.



Total labour force
48,460



Statistics Canada. (2016)



Average household income
\$97,700



Statistics Canada.

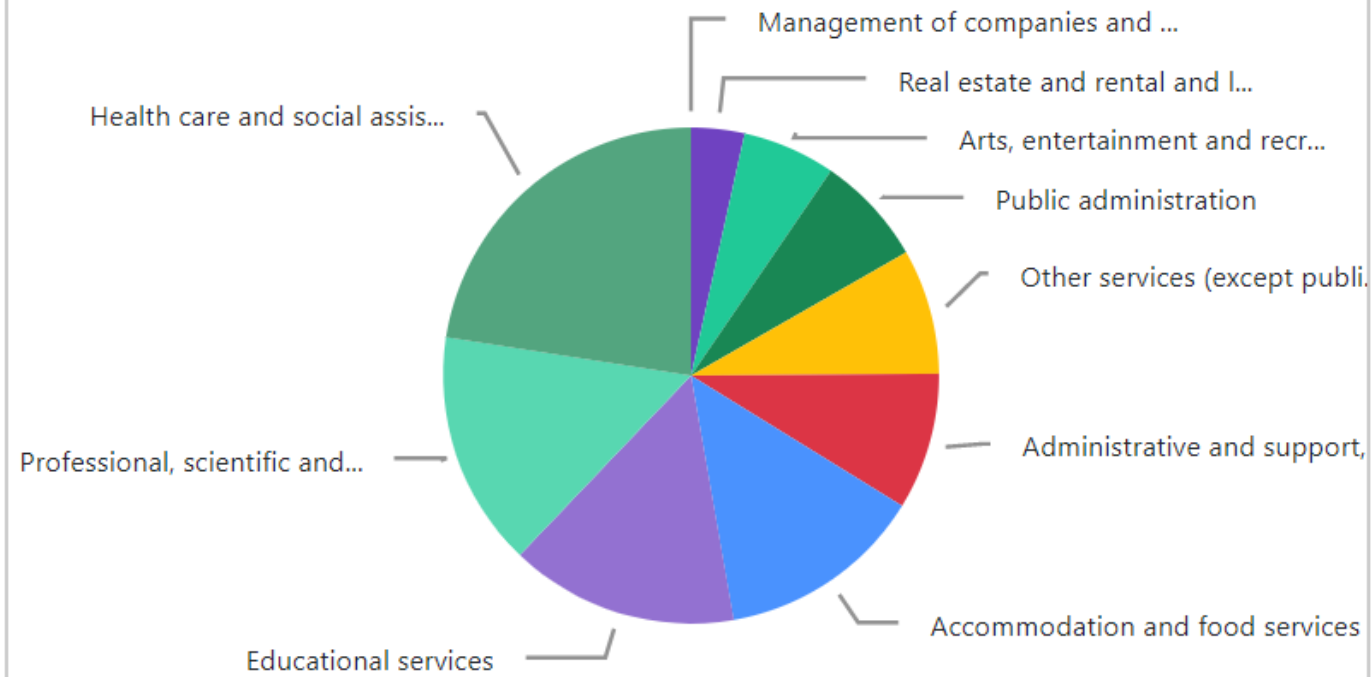


Median household income
\$78,500



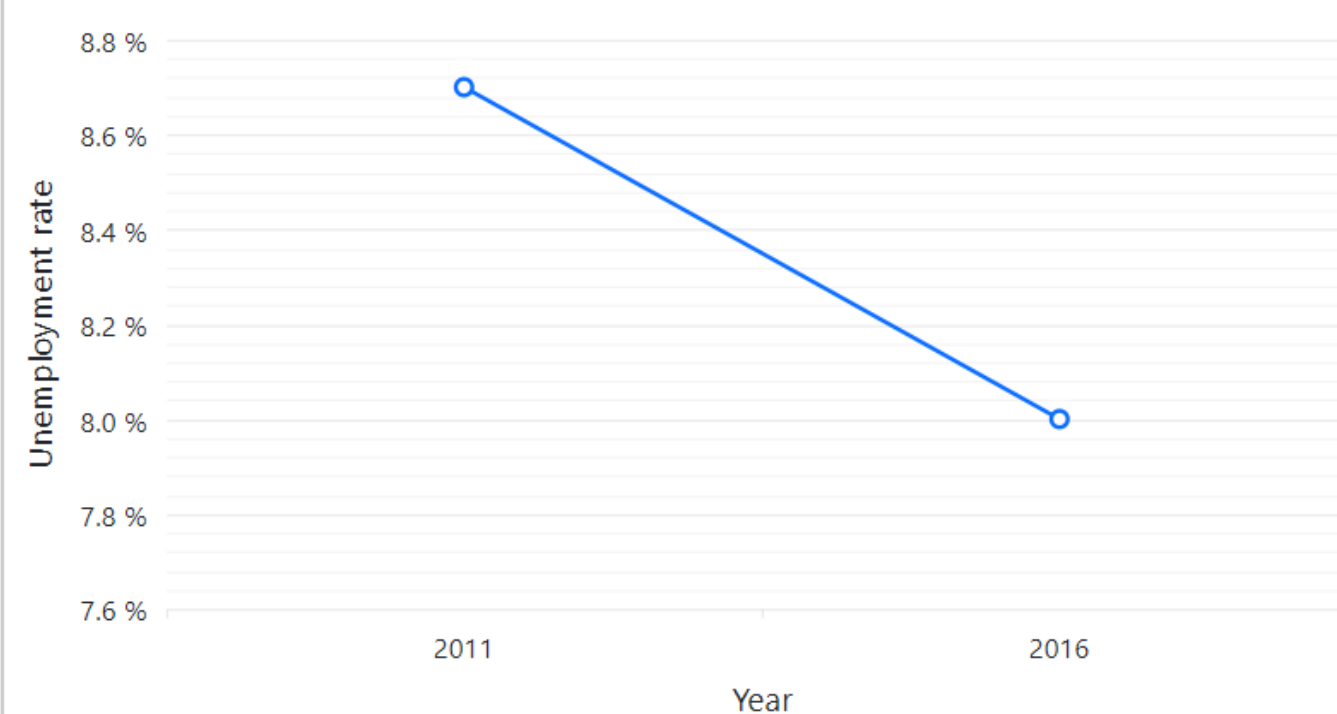
Statistics Canada.

Top 10 Jobs by Major Industry



Ontario Ministry of Agriculture, Food and Rural Affairs (OMAFRA)

Unemployment rate ⓘ

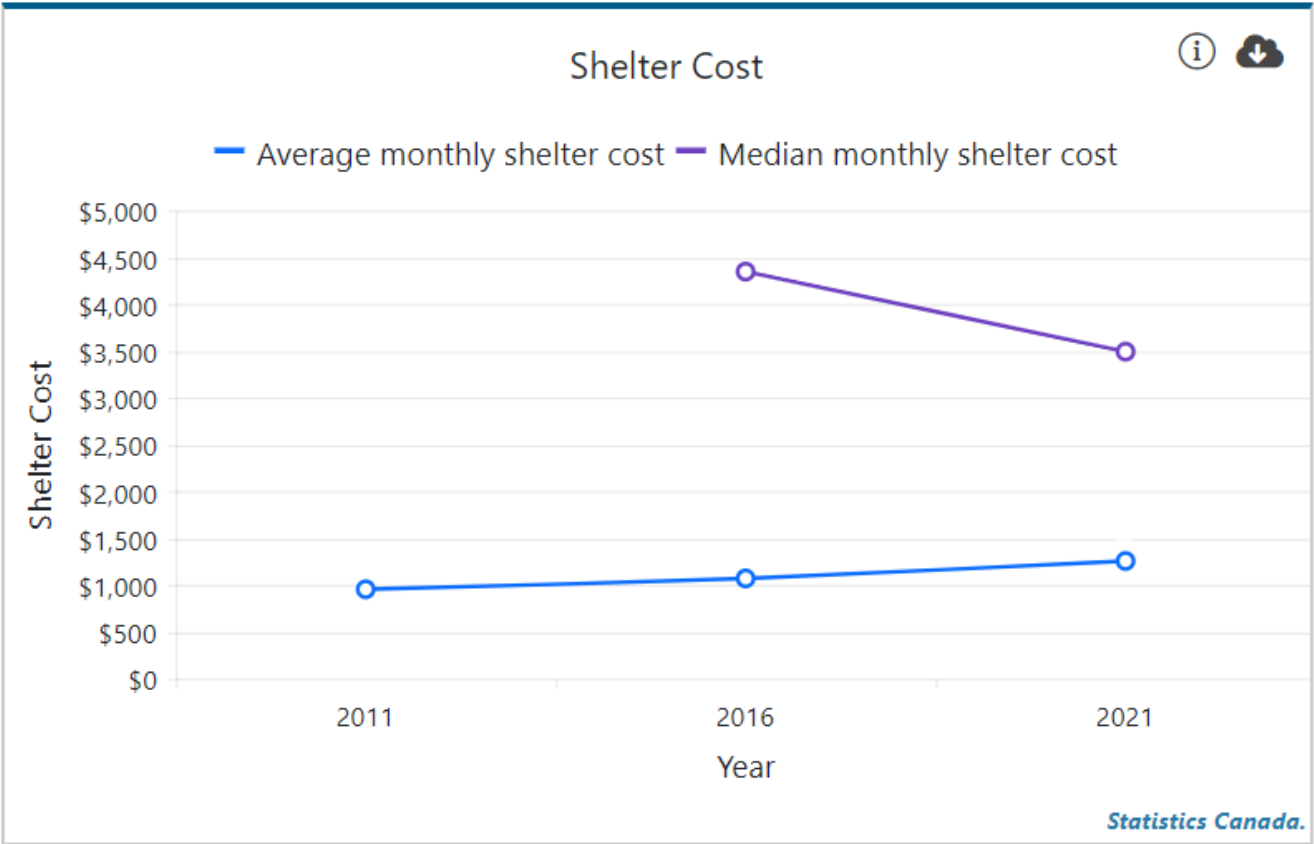
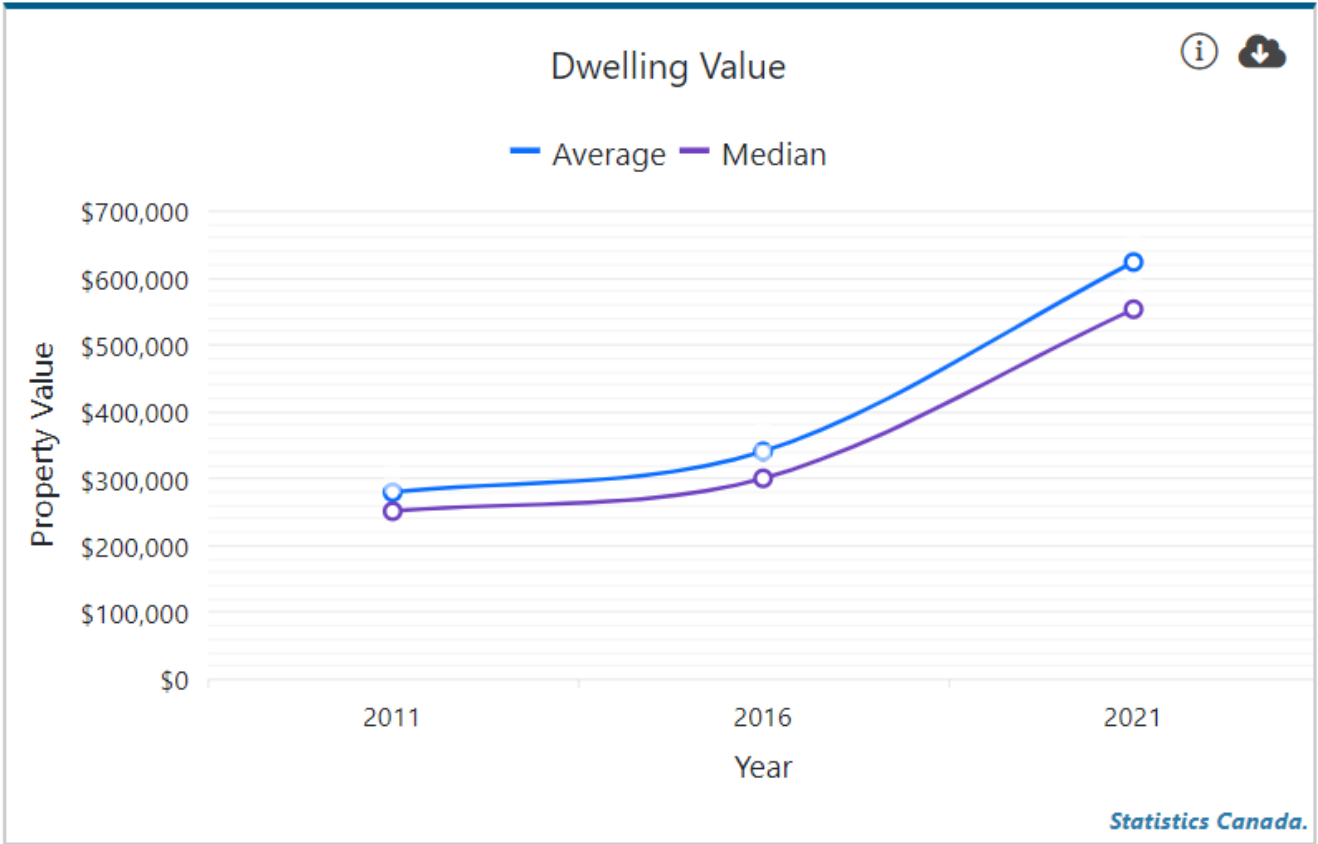


Statistics Canada.

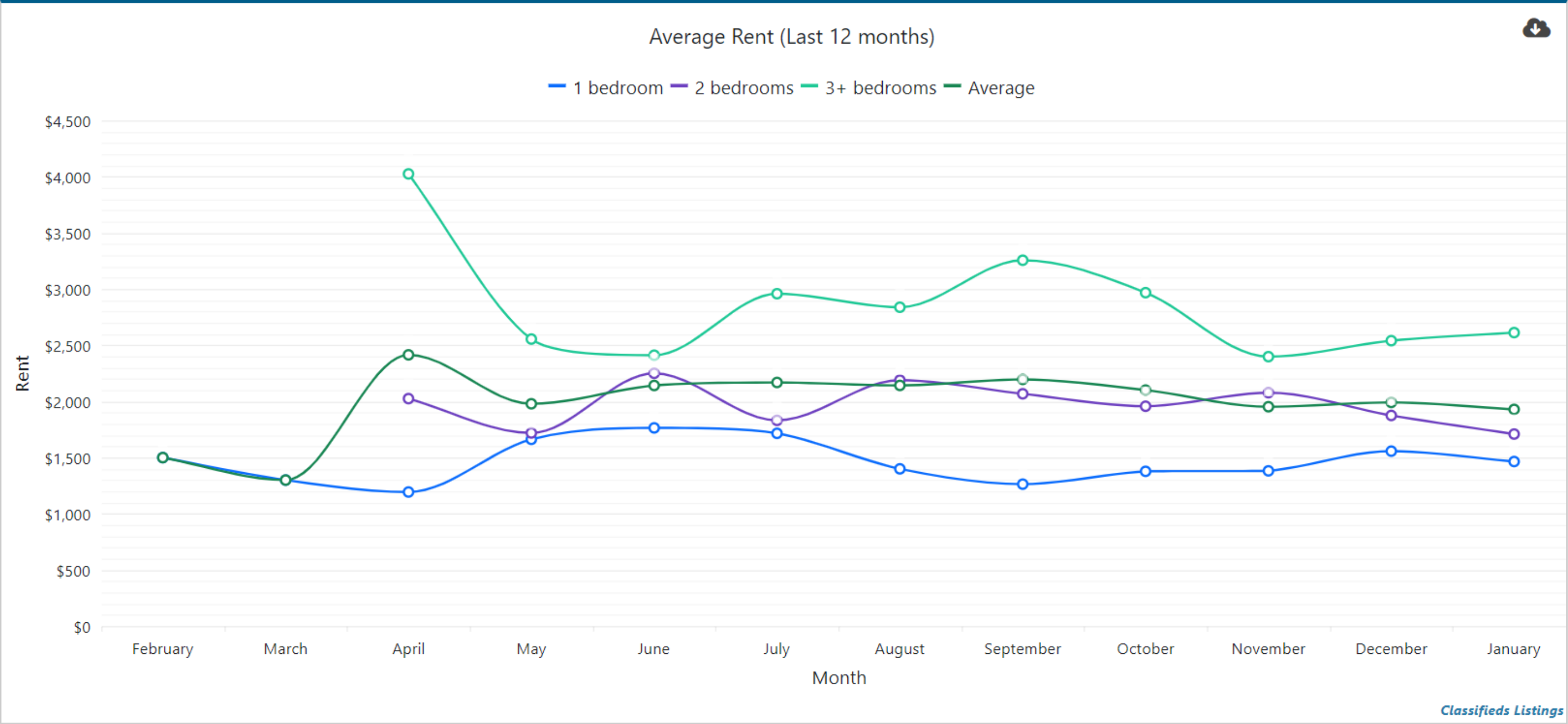
Housing Market

Housing Market ⓘ

This page shows information about a community's housing market including property values, asking rents, shelter costs, and housing affordability. The charts are interactive. Click on the legend items to hide them from the chart. You can also download the data for every chart or table by clicking on the cloud icon.



Housing Market



Housing Supply

Housing Supply ⓘ

This page shows information about a community's housing supply including dwellings, building permits, community housing, and waitlists. The charts are interactive. Click on the legend items to hide them from the chart. You can also download the data for every chart or table by clicking on the cloud icon.



Total Number of Dwellings
25,765

Statistics Canada.



Permits Issued for New Residential Construction
328

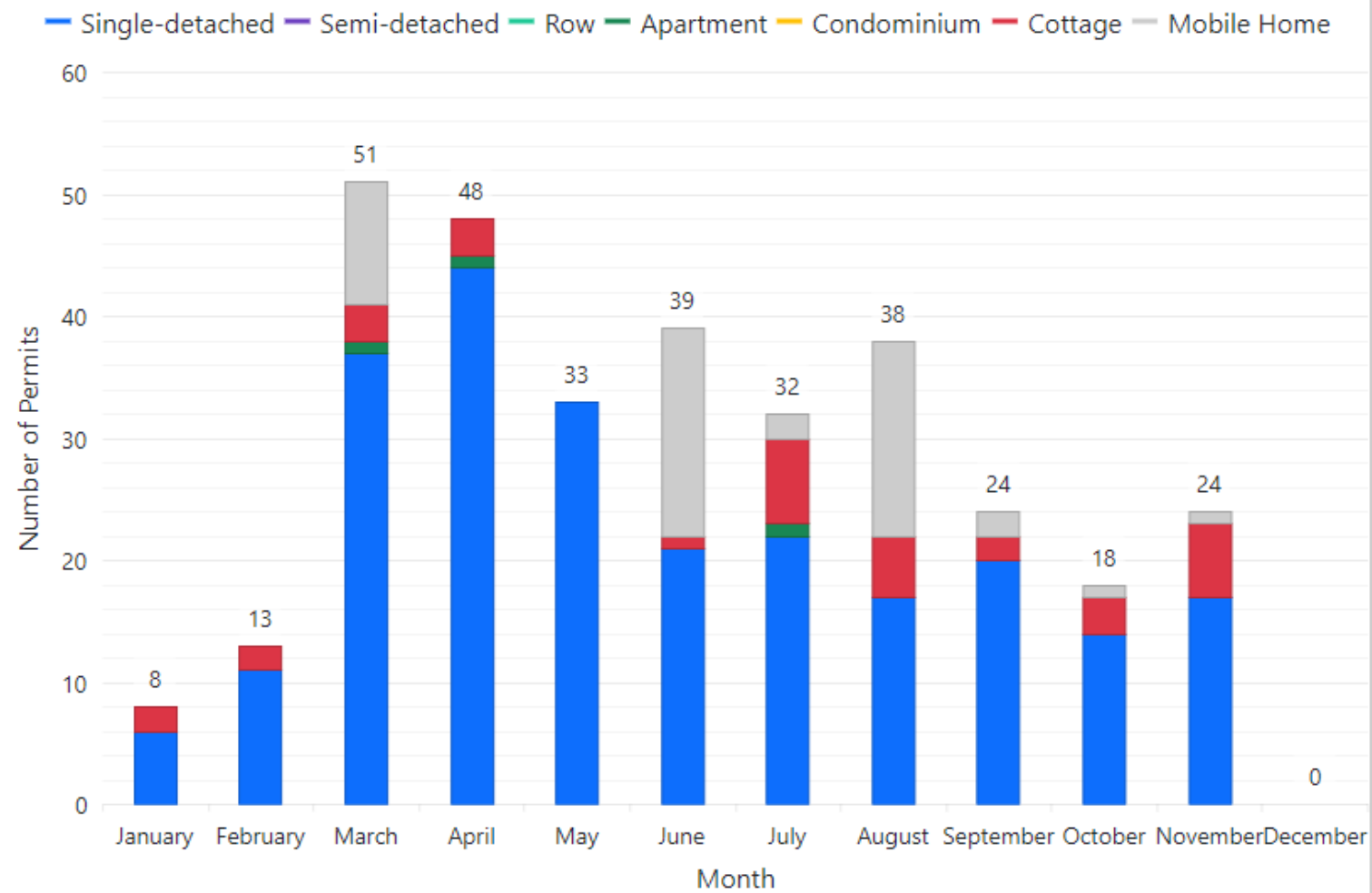
Statistics Canada



New Housing Units Completed
357

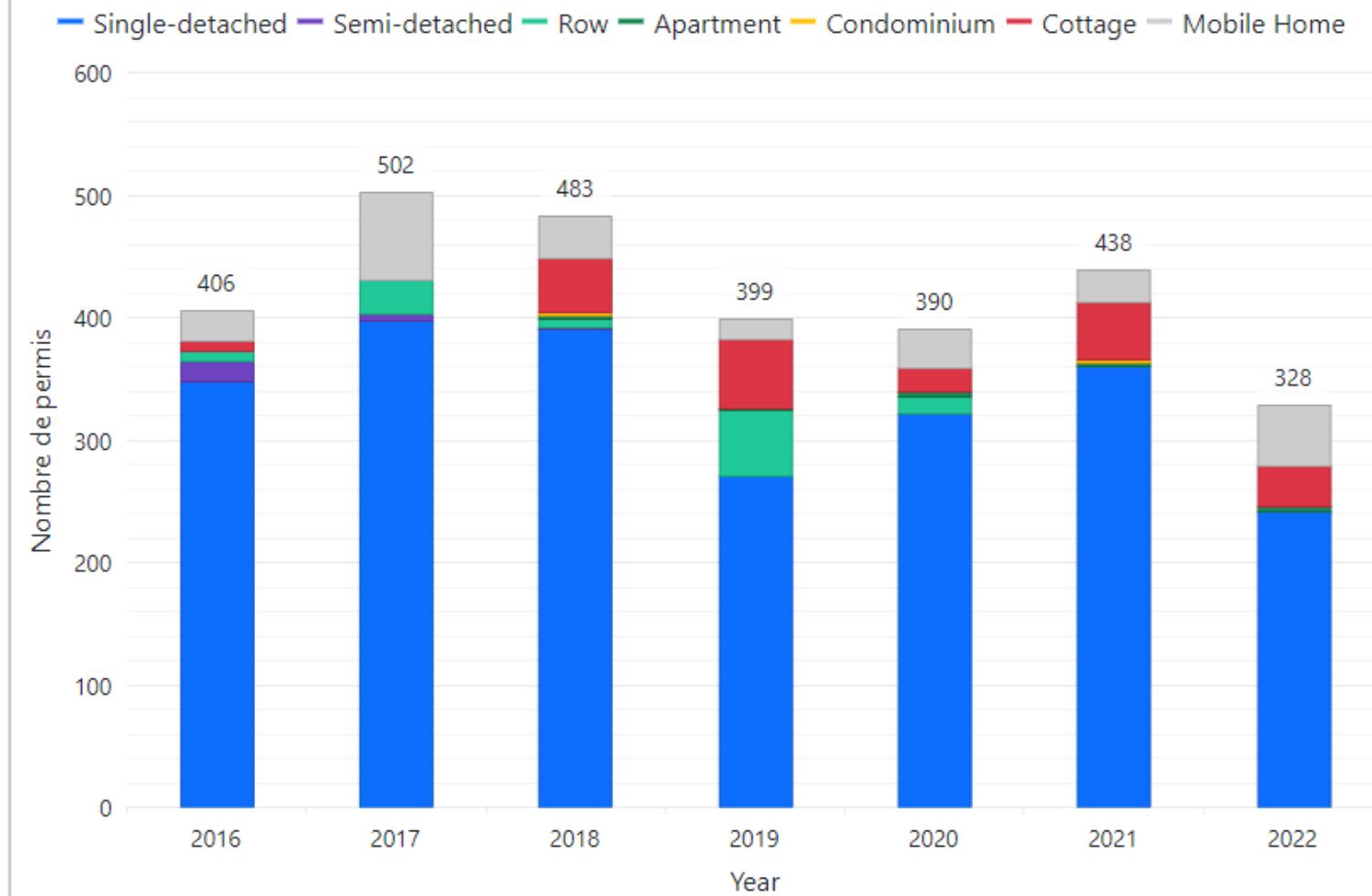
Statistics Canada

Permits Issued for New Residential Construction (Last 12 months) ⓘ ☁



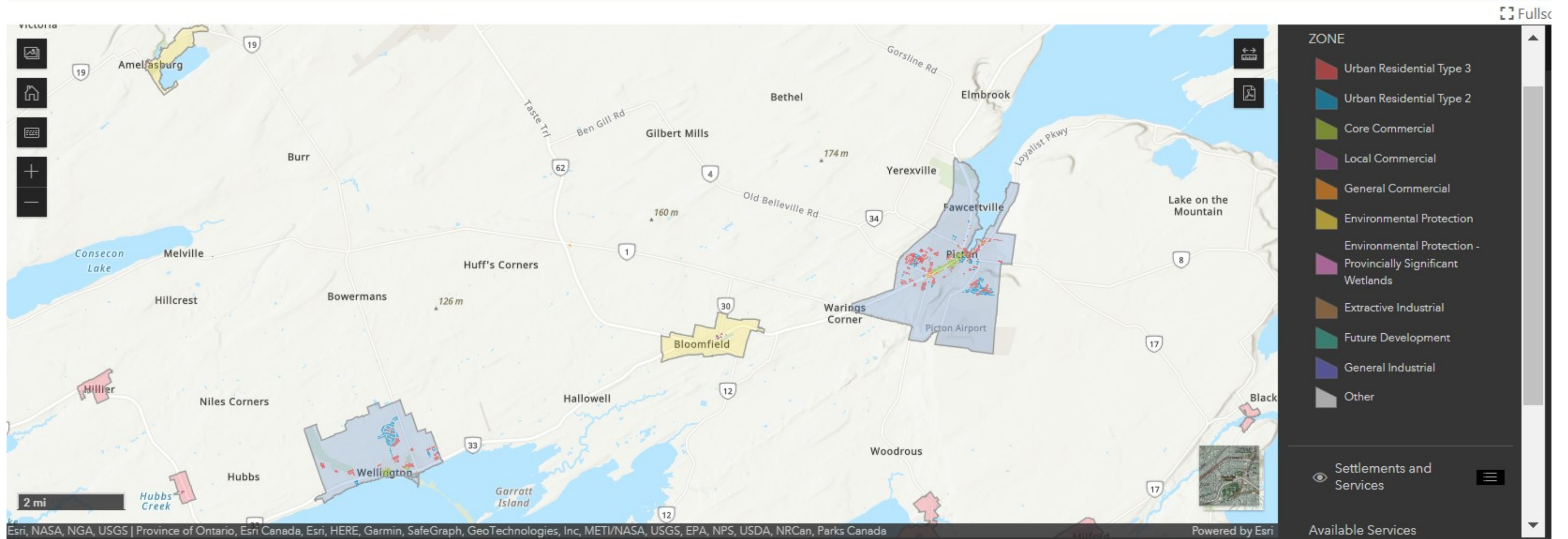
Statistics Canada

Permits Issued for New Residential Construction (Yearly) ⓘ ☁



Statistics Canada

Zoning



Community Comparison

RHIS

RURAL HOUSING
INFORMATION SYSTEM

Enter a municipality, city, township...

▼

Submit Feedback

Community Comparison Tool ⓘ

Export ▼

Print

Share

Clear

Fullscreen

<div><div>ADD LOCATION →</div><div>ADD FIELDS ↓</div></div>	Township BECKWITH	Township HAWKESBURY	Municipality TWEED	Township WHITEWATER REGION	Township GREATER MADAWASKA	Town PERTH
<div>Housing Market</div> <div>Households Spending 30% Or More Of Income On Shelter Costs</div>	400 <div>(reported 2016)</div>	1705 <div>(reported 2016)</div>	625 <div>(reported 2016)</div>	420 <div>(reported 2016)</div>	200 <div>(reported 2016)</div>	940 <div>(reported 2016)</div>
<div>Housing Market</div> <div>% Of Tenant Households Spending >30% Of Income On Shelter Costs</div>	13.1 % <div>(reported 2016)</div>	16.5 % <div>(reported 2016)</div>	19.0 % <div>(reported 2016)</div>	13.0 % <div>(reported 2016)</div>	15.5 % <div>(reported 2016)</div>	13.8 % <div>(reported 2016)</div>

RHIS

RURAL HOUSING
INFORMATION SYSTEM

▼

French (Canada)

Submit Feedback

Sign in or register

Overview

Demographics

Employment, Income & Economics

Housing Market

Compare Communities

Compare Communities

Shelter Costs

Employment, Income & Economics										
Average Household Income	\$101,600.00 <div>(reported 2021)</div>	\$93,100.00 <div>(reported 2021)</div>	\$75,700.00 <div>(reported 2021)</div>	\$101,000.00 <div>(reported 2021)</div>	\$93,600.00 <div>(reported 2021)</div>	\$96,800.00 <div>(reported 2021)</div>	\$162,000.00 <div>(reported 2021)</div>	\$120,400.00 <div>(reported 2021)</div>	\$94,000.00 <div>(reported 2021)</div>	\$82,900.00 <div>(reported 2021)</div>
Median Household Income	\$81,000.00 <div>(reported 2021)</div>	\$73,500.00 <div>(reported 2021)</div>	\$63,600.00 <div>(reported 2021)</div>	\$78,000.00 <div>(reported 2021)</div>	\$74,500.00 <div>(reported 2021)</div>	\$77,000.00 <div>(reported 2021)</div>	\$90,000.00 <div>(reported 2021)</div>	\$104,000.00 <div>(reported 2021)</div>	\$68,000.00 <div>(reported 2021)</div>	\$70,000.00 <div>(reported 2021)</div>
Average Asking Rent (Annual)	\$1,855.96 <div>(reported 2022)</div>	\$2,110.71 <div>(reported 2022)</div>	\$2,700.00 <div>(reported 2022)</div>	\$1,687.50 <div>(reported 2022)</div>	\$2,016.67 <div>(reported 2022)</div>	\$1,275.00 <div>(reported 2022)</div>	\$2,350.00 <div>(reported 2022)</div>	\$2,020.25 <div>(reported 2022)</div>	\$0.00 <div>(reported 2022)</div>	\$1,560.00 <div>(reported 2022)</div>
Average Asking Rent										
Housing Supply										
Apartments	19170 <div>(reported 2016)</div>	450 <div>(reported 2016)</div>	40 <div>(reported 2016)</div>	300 <div>(reported 2016)</div>	110 <div>(reported 2016)</div>	5 <div>(reported 2016)</div>	0 <div>(reported 2016)</div>	170 <div>(reported 2016)</div>	0 <div>(reported 2016)</div>	45 <div>(reported 2016)</div>

Community Comparison

Select Communities

Search for a location:

+ Add

- or -

Select an upper-tier municipality:

County of Lanark

Select a location:

Corporation of The Municipality of Mississauga

+ Add

Select a location...

County of Lanark

Township of Tay Valley

Township of Beckwith

Close

Select Data

Data Set:

Demographics

Value(s):

+ Add

Population

Projected Growth

Growth Period (years)

Number of people receiving government assistance

Single-parent households

Number of owner households

Close

13.0 %

(reported 2016)

CHALLENGES ENCOUNTERED

- Gaps in readily available data for rent prices and house prices
 - Limited number of listings on rental websites. Creates skewed monthly averages.
 - Realtor data cannot be easily accessed.
 - Available realtor data is compiled regionally by realtor associations and is not broken down by structure type or size.
- Challenges of obtaining government data outside of Stats Can.
- Are municipalities collecting rental data? Is there any interest/capacity for local data collection?

Opportunities & Implications

- How will this information be communicated to government and private granting bodies? In which ways could this platform best facilitate communication of this data?
- How do data tools like these fit into your municipal housing strategy? Private development strategy?
- How can centralized housing data tools work to facilitate collaboration across municipalities and sectors for better data access?

Thank You!

- Questions? Comments?
- Iain Storosko, Program Development Specialist, <istorosko@ruralontarioinstitute.ca>
- Kezia Cowtan, Housing Project Manager, <kcowtan@ruralontarioinstitute.ca>
- Danielle Letang, Housing Data Analyst, <dletang@ruralontarioinstitute.ca>